

HOLYOKE COMMUNITY COLLEGE

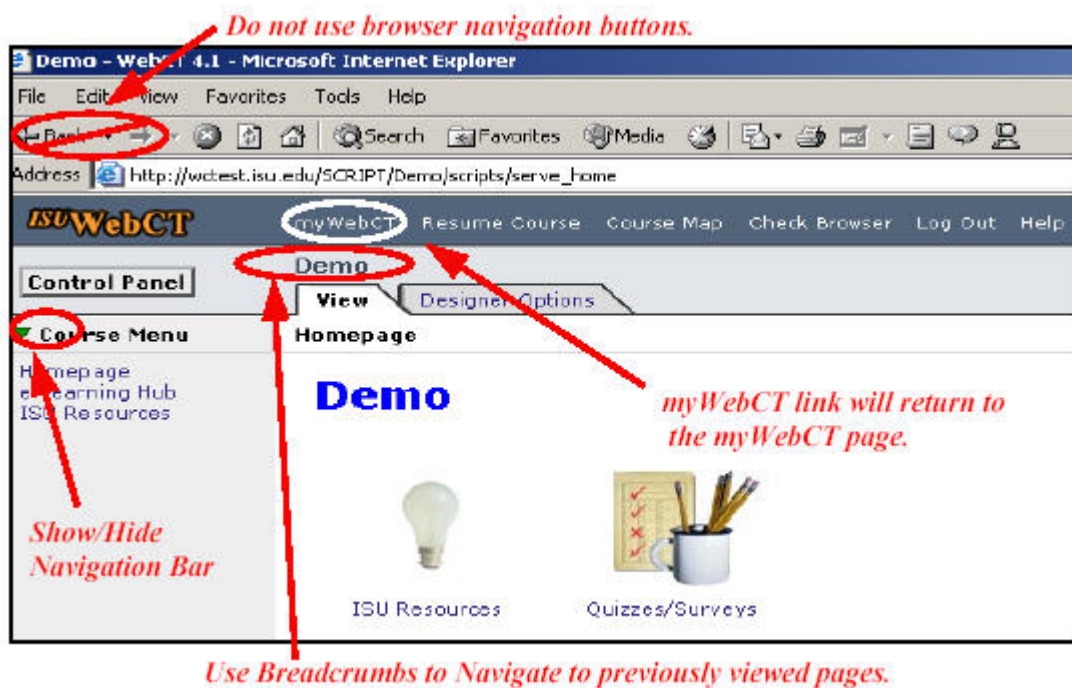
Navigation Rules

Because the WebCT software resides on a server, there is no need to install WebCT on personal computers. Everything needed within WebCT can be accessed through a web browser. While using WebCT, it is essential to use WebCT's navigational options rather than the browser's navigational buttons (back, forward, and reload/refresh).

The **myWebCT** text link is located at the top of the course window. This link directs the user to the myWebCT page, which allows navigation from one course to another.

The Course Menu includes a listing of course items and is specific to each course. This left-hand navigation bar can be hidden to allow more screen space. To hide the navigation bar, click on the little green arrow besides **Course Menu**. To reveal the navigation bar again, click on the arrow again.

Breadcrumb navigation is found beneath the Menu Bar. This menu displays a trail of previously viewed screens. To return back to the main course screen, click on the **Homepage** breadcrumb.



Holyoke Community College
303 Homestead Ave.
Holyoke, MA 01040
413.552.2124

